

GARDINER'S ISLAND WINDMILL - 1795

GARDINER'S ISLAND, NEW YORK

IN 1795, JOHN LYON, GARDINER, COMMISSIONED NATHANIEL DOMINY V, ONE OF THE REARMED DOMINY CRAFTSMEN, TO BUILD A NEW WINDMILL ON THE SITE OF THE "PETTICOAT MILL." HE HAD LOST DURING THE REVOLUTION GARDINER WAS A MEMBER OF THE HEALTHIEST AND MOST PROMINENT FAMILY ON THE ISLAND THAT BEARS THE NAME OF HIS ANCESTORS AND THE FIRST SETTLER, LYON GARDINER. HIS DESCENDANTS REMAIN OWNERS OF THE ISLAND AND ITS WINDMILL TO THIS DAY.

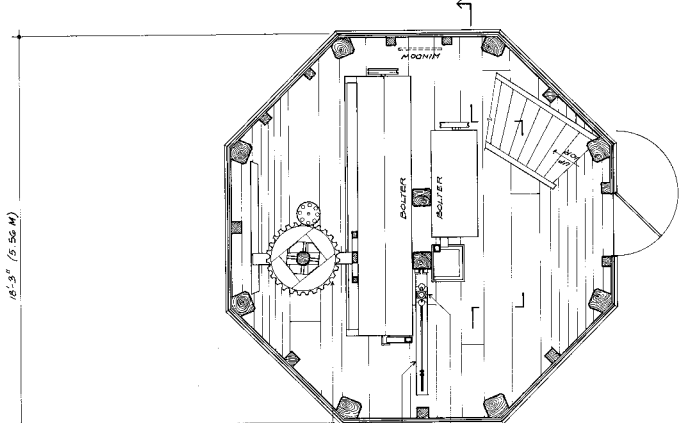
WHEN GARDINER'S MILL COLLAPSED IN 1815, NATHANIEL DOMINY V WAS HIRED TO REBUILD IT. WITH REMARKABLY FEW ALTERATIONS, THAT MILL STILL STANDS, UNUSED BUT WELL MAINTAINED. ALTHOUGH THE MILL LACKED SOME OF THE LABOR-SAVING CONVENIENCES FOUND ELSEWHERE - IT HAS NEITHER HOISTS NOR ELEVATORS - IT REPRESENTS SOME OF THE FINEST MILL-WORK OF THE PERIOD. PROBABLY, IT WAS USED PRIMARILY TO GRIND FEED FOR LIVESTOCK, AND NOT SO MUCH FOR FLOUR. LATER IN THE NINETEENTH CENTURY, THE OWNERS ADDED BULGING APPARATUS, A NEW WINDSHAFT, STOCKS AND PRINTS. BY 1885, IT WAS REPORTED TO BE PROVIDING FLOUR FOR THE ISLAND'S ENTIRE POPULATION. BUT SOON THE USE OF GARDINER'S ISLAND CHANGED. BY THE END OF THE NINETEENTH CENTURY, AGRICULTURE HAD DECLINED, AND IN 1915 THE ENTIRE ISLAND WAS LEASED AS A HUNTING PRESERVE. TODAY, THE WINDMILL, ALONG WITH A FEW OUTBUILDINGS AND TWO HOUSES, ARE THE ONLY REMINDERS OF THE ISLAND'S 230-YEAR AGRICULTURAL LIFESTYLE. THE MILL ITSELF IS ONE OF ONLY THREE EXANT DOMINY-CRAFTED WINDMILLS.

THIS RECORDING PROJECT IS PART OF A LONG-RANGE PROGRAM BY THE HISTORIC AMERICAN ENGINEERING RECORD (HAER) TO DOCUMENT ENGINEERING AND INDUSTRIAL WORKS IN THE UNITED STATES. THIS STUDY OF LONG ISLAND WINDMILLS AND TIDE MILLS WAS CO-SPONSORED DURING THE SUMMER OF 1977 BY HAER, A PROGRAM OF THE HERITAGE CONSERVATION AND RECREATION SERVICE AND THE SOCIETY FOR THE PRESERVATION OF LONG ISLAND ANTIQUITIES.

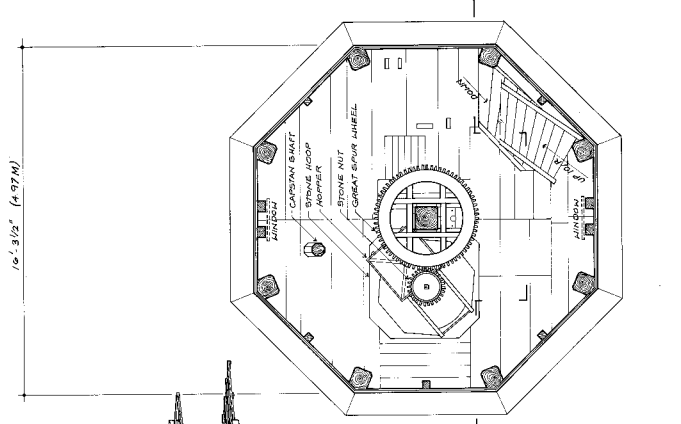
THE FIELD WORK, MEASURED DRAWINGS, HISTORICAL DATA AND PHOTOGRAPHS WERE PREPARED UNDER THE DIRECTION OF DOUGLAS L. GRIFFIN, CHIEF, HAER, AND T. ALLAN COMPTON, SENIOR HISTORIAN, HAER, PROJECT DIRECTOR. THE RECORDING TEAM CONSISTED OF NATHANIEL S. HOEFT AND CHALMERS G. LONG, JR., ARCHITECTS, AND ROBERT HEFNER, GREGORY PATYON AND GRANVA MARCUS, HISTORIANS. THE FORMAL PHOTOGRAPHY WAS DONE BY JAMES GREEN.



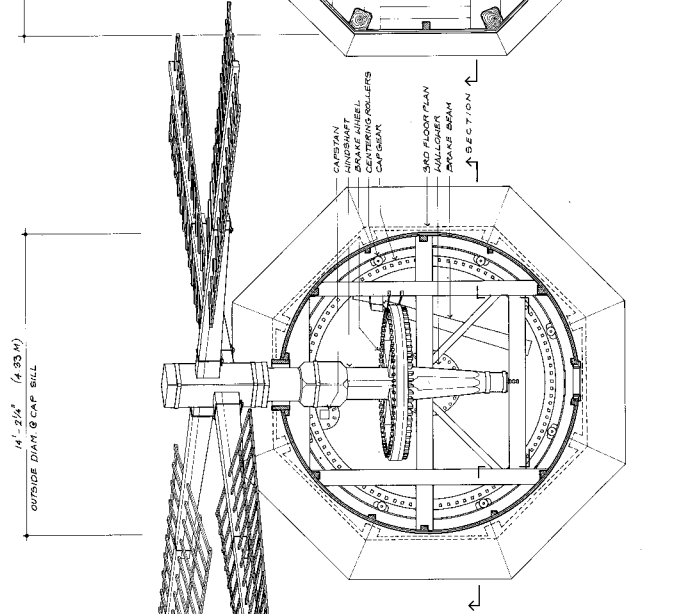
LOCATION MAP FROM USGS, NEW YORK - SUPPLEX CO. EAST, WEST QUADRANGLES 1957



FIRST FLOOR PLAN
MEAL FLOOR



SECOND FLOOR PLAN
STATIC FLOOR



CAP & WINDSHAFT PLAN

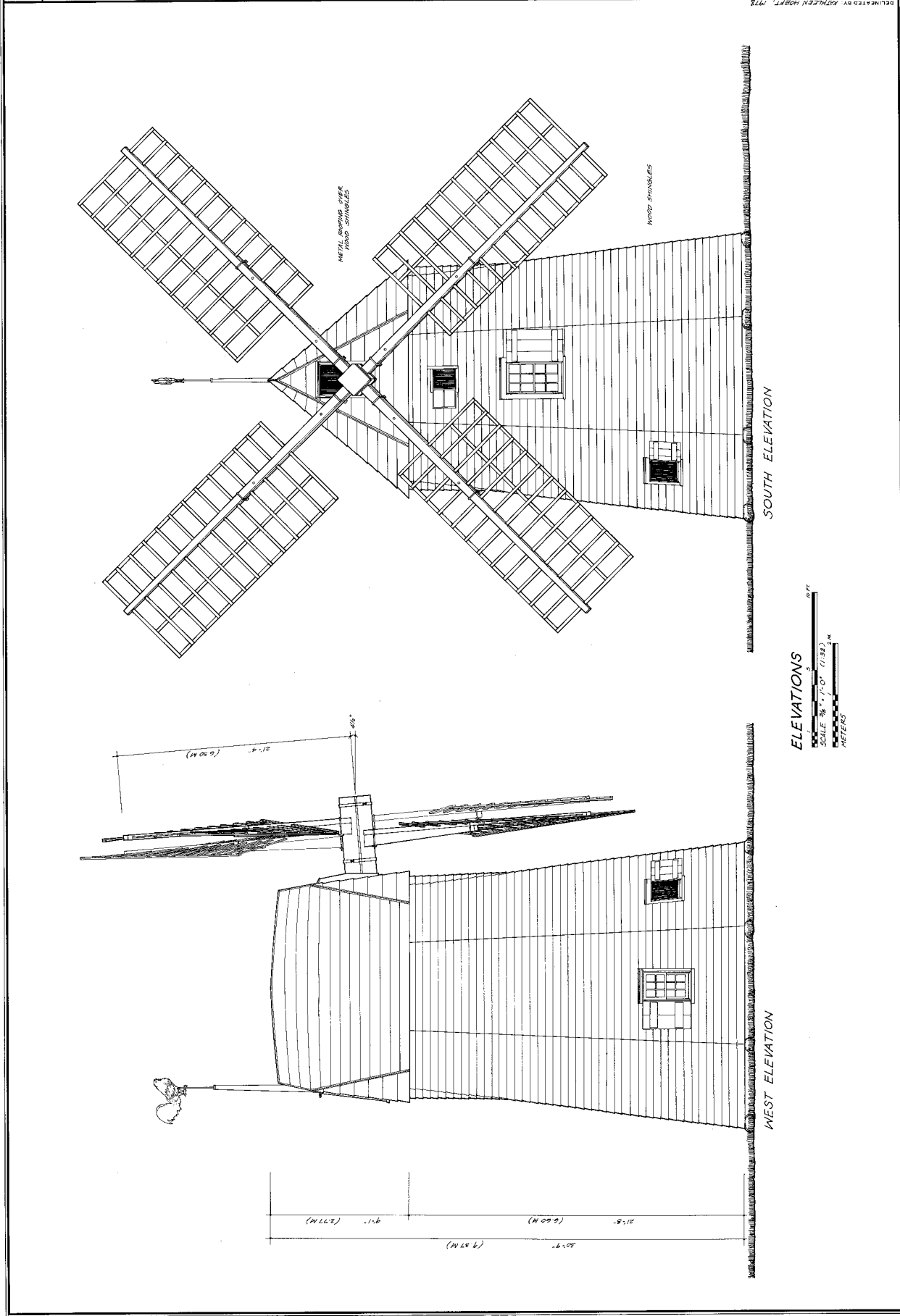


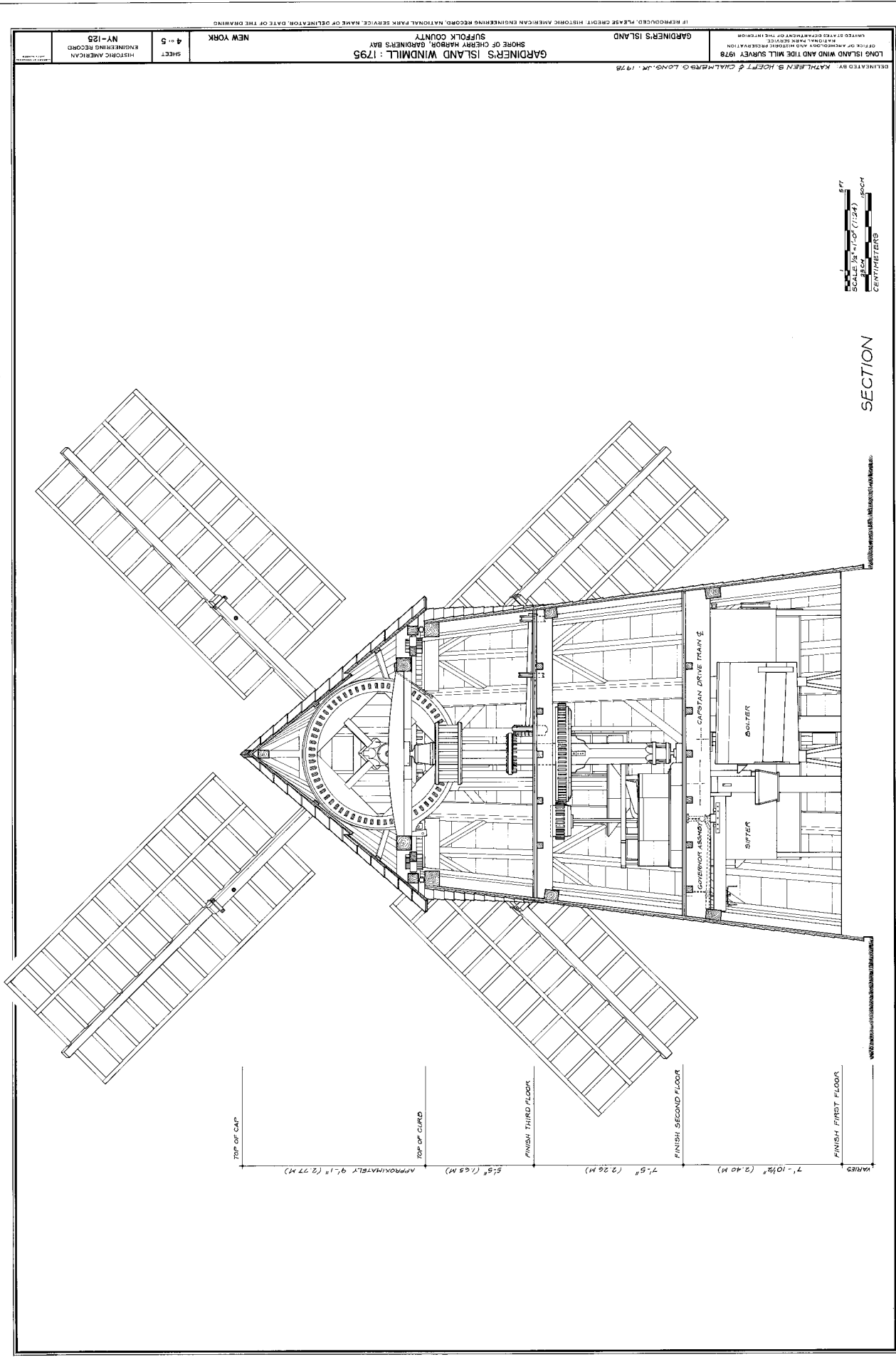
FLOOR PLANS



TITLE LINE

TITLE LINE





SCALE: 1/4" = 1'-0" (1:24)
 CENTIMETERS

SECTION

VARIES
 FINISH FIRST FLOOR 7'-10 1/2" (2.40 M)
 FINISH SECOND FLOOR 7'-5" (2.26 M)
 FINISH THIRD FLOOR 5'-8" (1.65 M)
 TOP OF CURD APPROXIMATELY 9'-1" (2.77 M)
 TOP OF CAP

LONG ISLAND WIND AND TIDE MILL SURVEY 1978
 OFFICE OF HISTORIC AND HISTORIC PRESERVATION
 STATE OF NEW YORK
 DIVISION OF CULTURAL AFFAIRS

GARDNER'S ISLAND
 SHORE OF CHERY HARBOR, GARDNER'S BAY
 SUFFOLK COUNTY
 NEW YORK

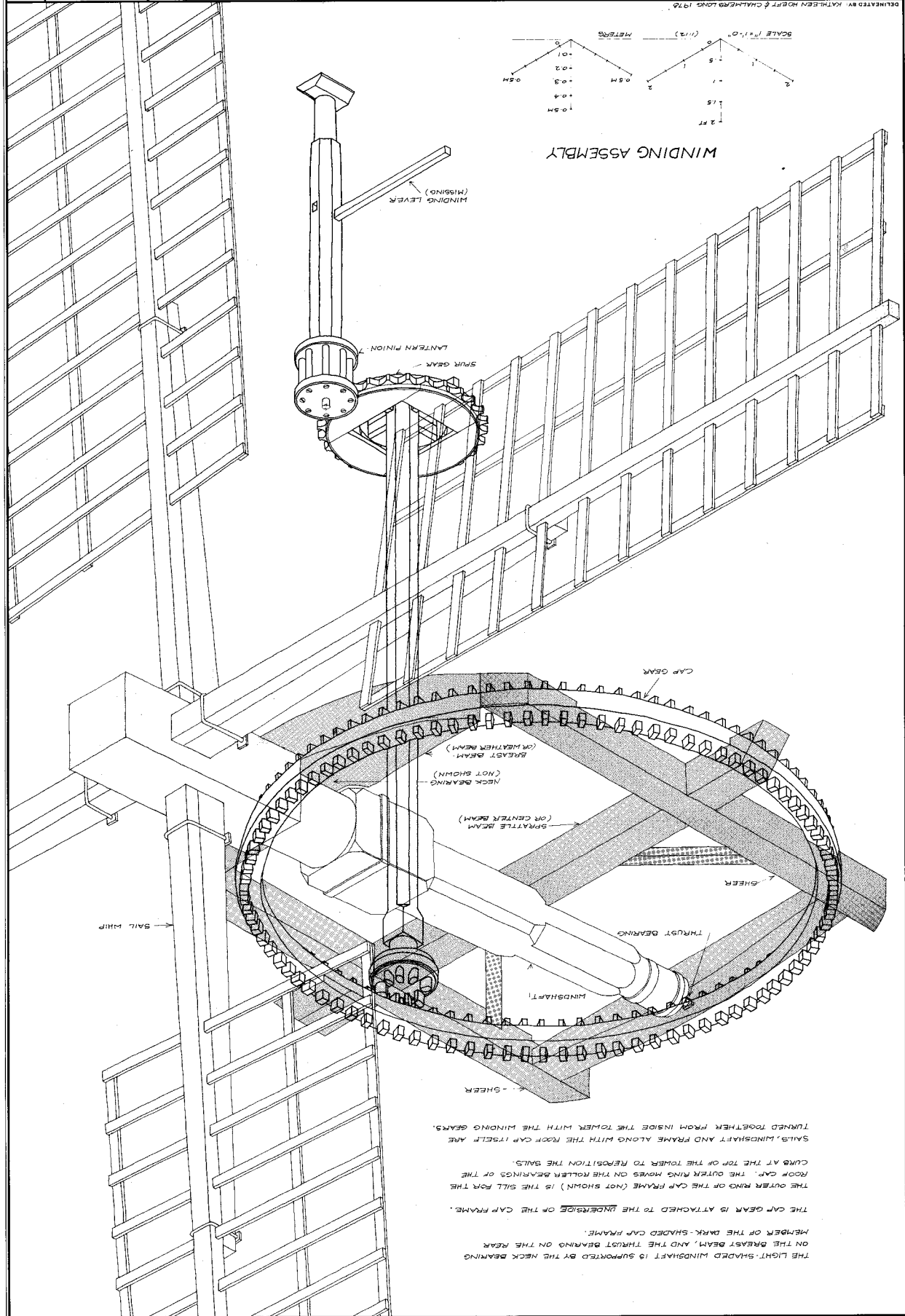
SHEET 4 OF 5
 HISTORIC AMERICAN
 ENGINEERING RECORD
 NY-125

IF REPRODUCED, PLEASE CREDIT: HISTORIC AMERICAN ENGINEERING RECORD, NATIONAL PARK SERVICE, NAME OF DELINEATOR, DATE OF THE DRAWING

DESIGNED BY: KATHLEEN B. HOEFT & CHARLES G. LONG, JR., 1978

TOP LINE

TOP LINE



THE CAP GEAR IS ATTACHED TO THE UNDERSIDE OF THE CAP FRAME.
 THE OUTER RING OF THE CAP FRAME (NOT SHOWN) IS THE SILL FOR THE
 ROOF CAP. THE OUTER RING MOVES ON THE ROLLER BEARINGS OF THE
 CAP AT THE TOP OF THE TOWER TO REPOSITION THE SALES.
 SALES, WINDSHAFT AND FRAME ALONG WITH THE ROOF CAP ITSELF ARE
 TURNED TOGETHER FROM INSIDE THE TOWER WITH THE WINDING GEARS.

THE LIGHT SHADED WINDSHAFT IS SUPPORTED BY THE NECK BEARING
 ON THE GREAT BEAM, AND THE THRUST BEARING ON THE REAR
 MEMBER OF THE DARK SHADED CAP FRAME.

TOP LINE

TOP LINE

44-57110-2A-100